

Cyber Security Awareness

@LJMU

SINCE THE START OF COVID RANSOMWARE HAS AFFECTED...



- 10 UK Universities
- 11 FE Colleges
- Multiple schools and academy trusts

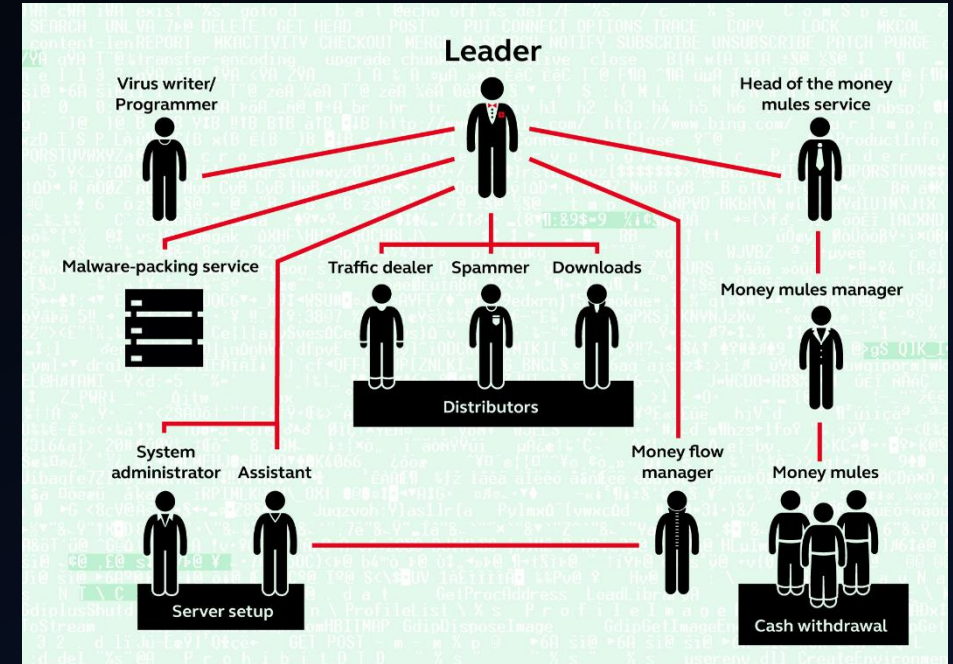
The education sector is a target of choice for cyber-criminals

Attacks increased 700% between 2019 and 2020

WHO / WHY? THREAT ACTORS

- “Script kiddies” – unskilled, using tools purchased online
- Hacktivists – seeking to promote a cause or ideology
- Organised crime / gangs – motivated solely by money
- Nation states
- Insiders

“74% of data breaches start with credential abuse” - Forbes



KEEPING YOUR PASSWORD SAFE

- DON'T

- Use weak passwords
- Re-use passwords
- Use information discoverable from social media
- Use dictionary words
- Use sequential numbers or letters
- Use keyboard patterns, eg qwerty
- Give your password to anyone (including ITS)

- DO

- Use passphrases, or three random words
- Use 2FA where available
- Use a password manager
- Test your account, set up alerts eg <https://haveibeenpwned.com/>

TOP 10 BAD PASSWORDS

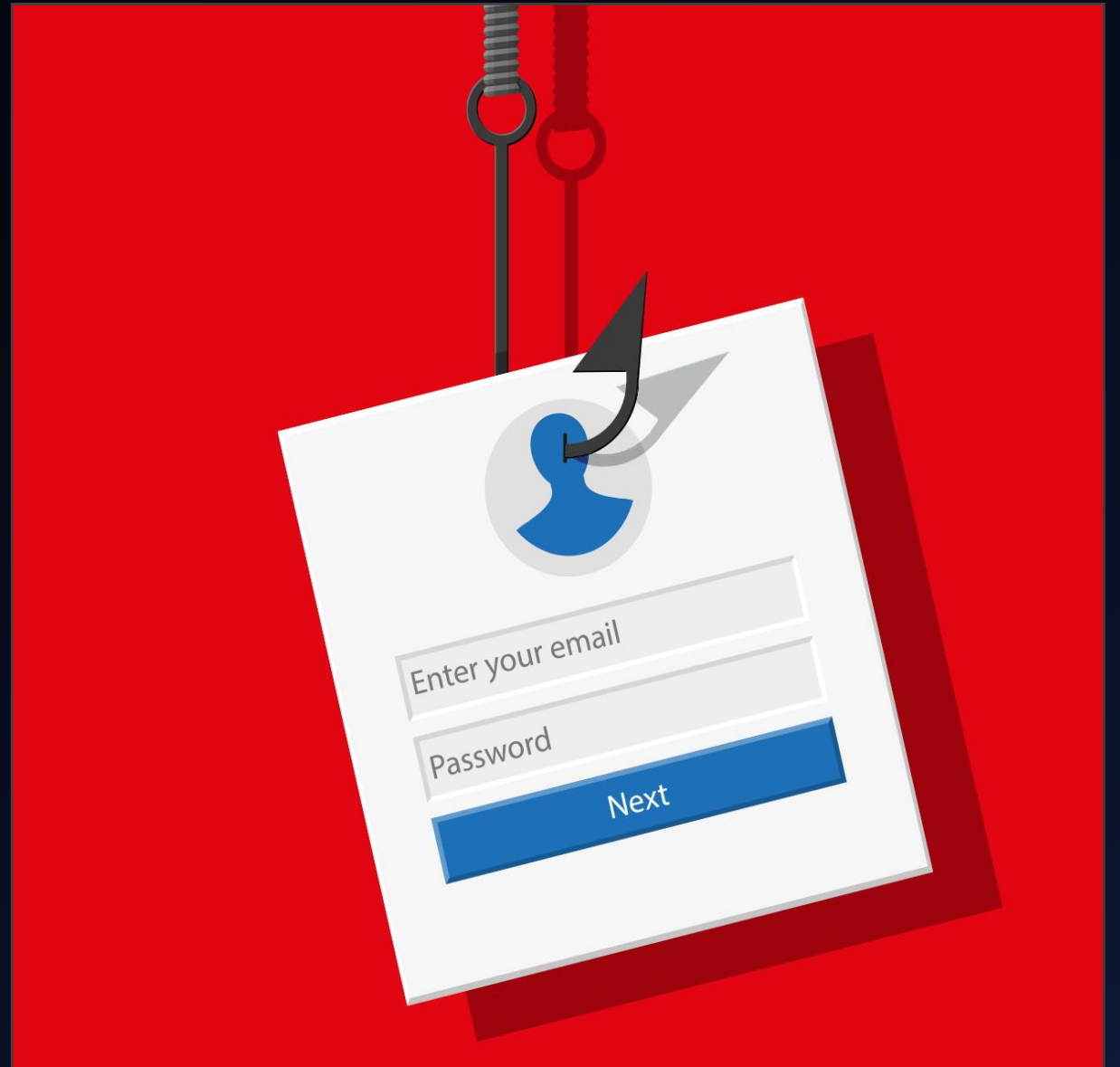
- 123456
- 123456789
- qwerty
- password
- 111111
- 12345678
- abc123
- 1234567
- password1
- 12345

PREMIER LEAGUE PASSWORDS

1. liverpool
2. chelsea
3. arsenal
4. manutd
- ...
11. mancify

WHAT IS PHISHING?

- Attempts to trick you into revealing personal data, eg username and password
- Often uses a malicious attachment, or a link to a malicious website
- Phishing is generally indiscriminate, sent to many recipients
- Spear phishing is targeted, and may use personal information harvested from other sources to increase credibility
- Victims of phishing at LJMU have had payroll data changed, and wages paid into the attacker's bank account!



HOW TO AVOID BEING PHISHED...

- Do not open attachments or click links in emails you were not expecting
- Check with the sender, eg by phone or text, to see if they really sent the email
- Think carefully before taking any action based on email requests
- Be especially suspicious if the email suggests a sense of urgency
- Other tactics used in phishing emails include:
 - Scarcity
 - Familiarity
 - Authority
- They often prey on our desire to help, and our tendency to trust

USEFUL LINKS

Password Breach Lists:

- <https://haveibeenpwned.com/>
- <https://breachalarm.com>
- <https://www.dehashed.com>

- <https://www.ncsc.gov.uk>
 - Guidance on creating good passwords
 - General information on security and staying safe online